

HOME

VAIL VALLEY

REAL ESTATE & MOUNTAIN LIFESTYLES

JUNE 2021

INSIDE
FINDING
TREASURES

—
FIRE
MITIGATION
—

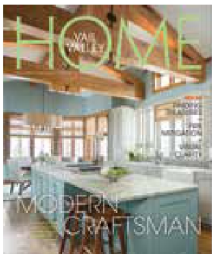
VISUAL
CLARITY

MODERN CRAFTSMAN

Character and
workmanship
figure largely
in remodeling
project



Grayson+Christie Interior Design spearheaded the effort to modernize this Eagle County home. PHOTO BY KIMBERLY GAVIN



ON THE COVER

This remodeling project included making the kitchen brighter and more open, helped in part by the robin's egg blue paint. See page 66 for more photos.

Photo by Kimberly Gavin

ate spring on the cusp of summer is such a hopeful time in the Vail Valley. The snowmelt leaves behind deeply watered earth that, with the sun's help, becomes full of life and growth. Our spirits tend toward renewal and growth, too. They crave a freshening, a reinvention.

Certainly this applies to the people we are, but also to our homes, which are both our starting point for the day, and our finishing spot at night. The impulse to update and brighten is understandable, one that's easy to embrace.

Setting out with a detailed plan of action is a tried and true method, and one that local architects endorse. But for those who prefer to paint a wall, move a lamp or discover a new treasure, let yourself have fun with it. This is a beautiful valley and we're lucky to live here.

HOME

Vail Daily Publisher

MARK WURZER
mwurzer@vaildaily.com

Editor

WREN BOVA
wren@vaildaily.com

Art Director

MALISA SAMSEL
msamsel@cmnm.org

Photo Editor

DOMINIQUE TAYLOR

Ad Director

DANIEL HANSON
dhanson@vaildaily.com

Circulation Manager

DAVID HAKES
dhakes@vaildaily.com

Account Managers

SANDIE AVEIL
saveil@vaildaily.com

HEIDI BRICKLIN
hbricklin@vaildaily.com

MARK BRICKLIN
mbricklin@vaildaily.com

CAROLE BUKOVICH
cbukovich@vaildaily.com

KASHA DUNNE
kdunne@vaildaily.com

CHRIS MATHEWS
cmathews@vaildaily.com

EMILY PETERSON
epeterson@vaildaily.com

HATTIE RENSBERRY
hrensberry@vaildaily.com

Design Manager

AFTON POSPISOLOVA

Advertising Services

JENNIFER KLINE

Contributors

KEVIN BANKER
KATHY FILGO
KIM FULLER
KIMBERLY GAVIN
KELLI HOLTZ
CLAIRE KANTOR
SALLY KILBRIDGE
KIMBERLY NICOLETTI
ANGUS RAINBOW
ALLIE YAZEL

BEFORE & AFTER

Remodeling project focuses on modern craftsman aesthetic

by KIM FULLER • photos by KIMBERLY GAVIN



THE GOAL OF THIS REMODEL CAN BE SUMMED UP IN TWO WORDS: LIGHTEN and modernize. Olivia Grayson of Grayson+Christie Interior Design says she was “thrilled” with the overall feel of the transformation of the space. “The original house was very dark with the dark beige and green wall color, making the orange woodworking feel very heavy,” explains Grayson. “Keeping the original woodwork but updating the color palette with greys and blues helped tremendously to lift the space giving it a youthful, yet sophisticated feel.”



Another focus of the project was to keep and incorporate many of the home's original details that gave it character and made it so special.

"We worked to find a home for each original piece of antiques and stained glass whether it be in a cabinet, in a tile wall or in a door," Grayson adds.

Grayson was the lead designer responsible for reworking the interiors, including space layout and finishes, as well as selections of soft goods — fabrics, furnishings and lighting. Alex Coleman of Coleman Custom Homes was the general contractor on the project.

"This home was built in true craftsman style," shares Grayson. "The beauty and character of the home's woodworking and stained glass details were what drew the clients to this property. The client's wish was to keep the craftsman feel but with a modern twist, so that is what we were hired to do — produce and implement our vision for 'modern craftsman' style."

The remodel included wood flooring and paint throughout, as

“THE CLIENT’S WISH WAS TO KEEP THE CRAFTSMAN FEEL BUT WITH A MODERN TWIST, SO THAT IS WHAT WE WERE HIRED TO DO — PRODUCE AND IMPLEMENT OUR VISION FOR ‘MODERN CRAFTSMAN’ STYLE.”

What are you waiting for...

Think quality of life.

SLIFER

SMITH &

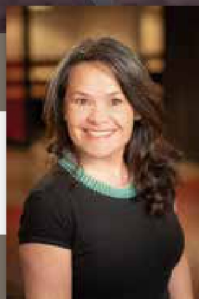
FRAMPTON

Forbes
GLOBAL PROPERTIES



LODGE AT VAIL #406 | VAIL VILLAGE
3 bed | 3 bath | 1,443 sqft | Sold for \$4,100,000

SOLD IN 24 HOURS



If you want to know more about market trends, call Rene today.

RENE BLANCHETTE

970.390.2816 | rblanchette@slifer.net

SSF Real Estate, 281 Bridge Street

VailRealEstatebyRene.com

VAIL VALLEY'S
ROOFING EXPERTS



40928 US HWY 6 UNIT E
EAGLE-VALE, CO 81620

SPRING IS HERE

LET'S MAKE SURE YOUR
ROOF IS READY.



WWW.CAPITALVAIL.COM

970-235-1170



Capital Roofing specializes in residential and commercial, luxury roofing replacement and repair. We take pride in our craftsmanship. Treating houses like homes and clients like family.

well as updating the kitchen, powder room and master suite; lightening and lifting the overall home for a brighter and younger feel. Additional bed and bathrooms were also created to accommodate the family of five.

"We reworked the kitchen to achieve a lighter and more open feel," says Grayson. "We eliminated the base and upper cabinets separating the kitchen and the breakfast nook, creating a galley-style kitchen, with ample cabinet storage and working surface at both the island and along the perimeter walls."

In keeping with the craftsman style, they went with a Shaker cabinet and handmade tile backsplash. They brightened the space with the off-white paint and glazed perimeter cabinets. The island is painted in a robin's egg blue, beautifully complementing the stain color of the original woodwork.

"It was important to the new homeowners to reuse the antique mirrored signs from the original



LIONSHEAD | RITZ CARLTON RESIDENCES R-314
3-Bedroom | 4-Bathroom | 2,143 +/- Sq.Ft. | \$4,195,000



EDWARDS | LAKE CREEK | 575 PILGRIM DRIVE
8-Bedroom | 9-Bath | 8,922 +/- Sq.Ft. | \$5,199,000

Dana Correia

I'm here to help you find your perfect home,
give me a call today.

970.390.3141 | dcorreia@slifer.net
BeaverCreekLuxuryHomes.com



SLIFER
KIRBY &
FRANKTON

Forbes

LIFE IS BETTER WHEN YOU HAVE A PLAN

• Life • Home • Auto • Business



Call me to get covered today!

970.845.8910

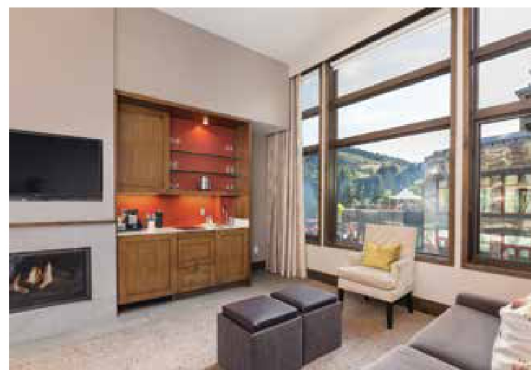
Froman Agency
Your Local Agent

AVON, CO



FARMERS
INSURANCE

MY RECENT MARKET ACTIVITY



JUST LISTED

WESTIN RIVERFRONT RESORT AND SPA 144

Studio | 1-bath | 446 sq.ft. | \$475,000



JUST SOLD

587 GOLD DUST

3-bed | 3.5-bath | 2,961 sq.ft. | \$1,542,000



SLIFER

SMITH &

FRAMPTON

Forbes
GLOBAL PROPERTIES

Jay Peterson
Park Hyatt Office
970.333.3398
jpeterson@slifer.net

I live here, I work here, I play here.
Find your trusted advisor at

JayPetersonRealEstate.com



In the shower they used natural stone with a handmade tile accent, and went with custom design on the back shower wall adding a stylized touch to the otherwise simple shower walls.

The team relocated the laundry room and office, combining these spaces to create an en suite nursery. They then turned the lower level's exercise room into the guest bedroom with an en suite bath.

"In addition to the kitchen and master suite, I personally loved the transformation of the powder room," shares Grayson. "We eliminated the chamfered walls and reworked a very small space to showcase the wall mural and modern washstand. I also really loved the changes to the master bedroom — again, keeping the original architectural and woodworking details but updating the space with the wall coverings and color palette as well as the furnishings and whimsical art." 

kitchen," says Grayson. "We incorporated these in the cabinetry above the Subzero integrated refrigerator and freezer units."

They reworked the master bathroom and master closet, making the master bathroom more spacious. They added painted cabinetry giving the client more bath storage and keeping the area light and bright.

"We incorporated the home's original stained glass windows into the vanity wall, also allowing natural light to filter through into the closet on the opposite side of this wall," Grayson explains. "We switched the built-in tub for a freestanding tub, and relocated the master shower, making it a focal point and getting more natural light into the shower."